



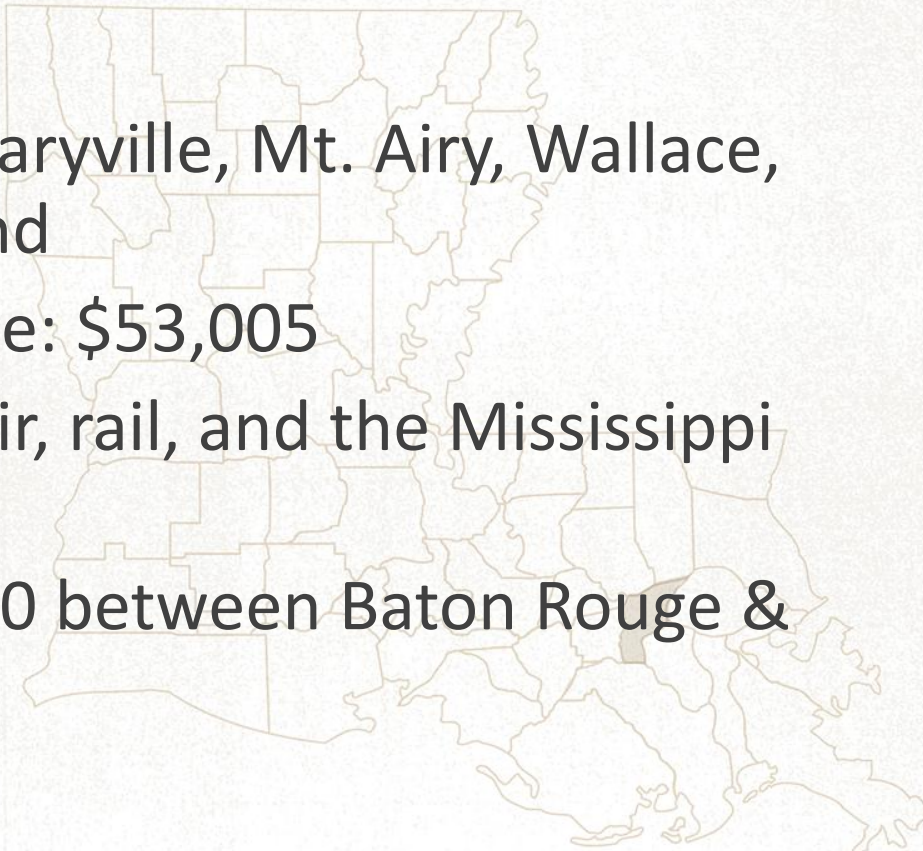
HURRICANE ISAAC

- National Disaster Recovery Framework (NDRF)
- Long Term Recovery Group (LTRG)
- Citizens Advisory Committee (CAC)



ABOUT ST. JOHN THE BAPTIST PARISH

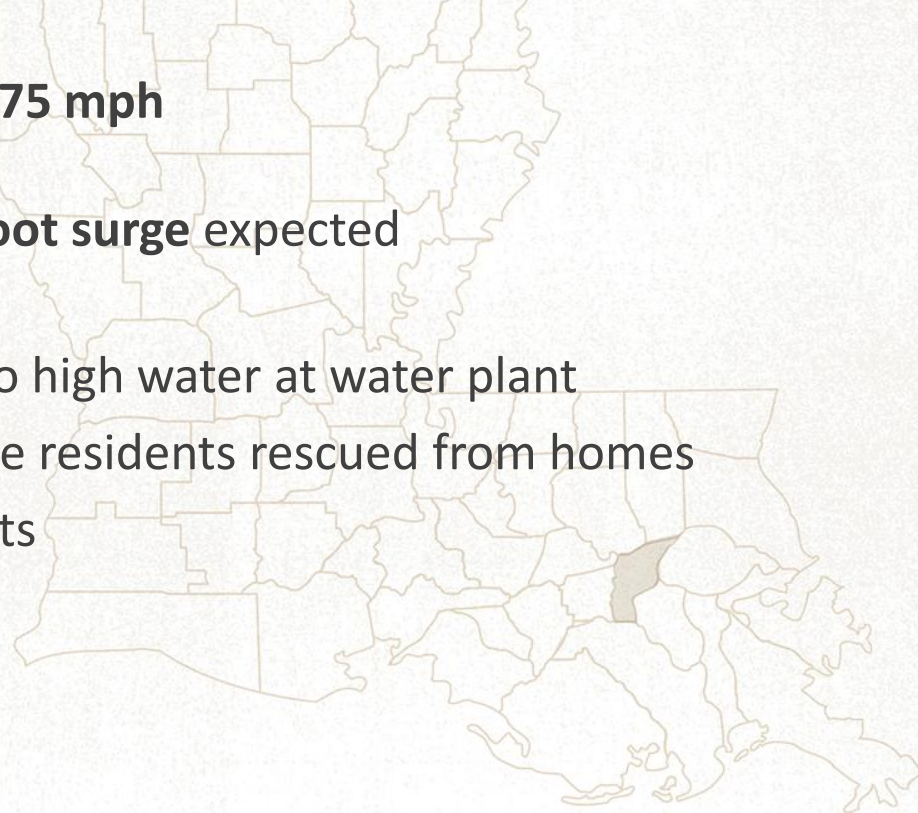
- Population: 45,924
- Cities: LaPlace, Reserve, Garyville, Mt. Airy, Wallace, Edgard, Lucy, Pleasure Bend
- Average Household Income: \$53,005
- Availability of interstate, air, rail, and the Mississippi River
- Located along Interstate-10 between Baton Rouge & New Orleans





HURRICANE ISAAC TIMELINE

- Isaac makes **landfall** along the coast of **Southeastern Louisiana** at approximately **2:00 a.m. Wednesday, August 29, 2012**
 - **Category 1 Hurricane** - Winds up to **75 mph**
 - **Heavy rainfall** – **14 inches**
 - **Unprecedented Storm Surge** - **5-8 foot surge** expected
 - **Search & Rescue** for 48 hours
- Water service shut off to residents due to high water at water plant
- **Shelter activated at local church** to stage residents rescued from homes
- **Power outages** affected 95% of residents





PARISH PREPARATIONS

PARISH PREPARATIONS

- Approximately **30,000 sand bags** issued
- **Voluntary evacuation** issued for **low-lying areas**
- Plans in place for **Parish Shelter & Transportation**
- **Emergency contact information** released by the Parish to residents
- **Sheriff** doubles shifts & prepares to enforce **6:00 p.m. curfew**
- **St. John Faith-Based Organizations for Disaster Preparedness** activated

PARISH PREPARATIONS (Continued . . .)

- No one was prepared for this . . .





RESPONSE

RESPONSE

- LA National Guard, LA Dept. of Wildlife & Fisheries, LA Dept. of Children and Family Services, U.S. Coast Guard, Fire Department, Sheriff's Office & Volunteers:
 - Assisted in **search** and **rescue** efforts
- **Local Church** served as staging for residents & pets before chartered to **state shelter locations**

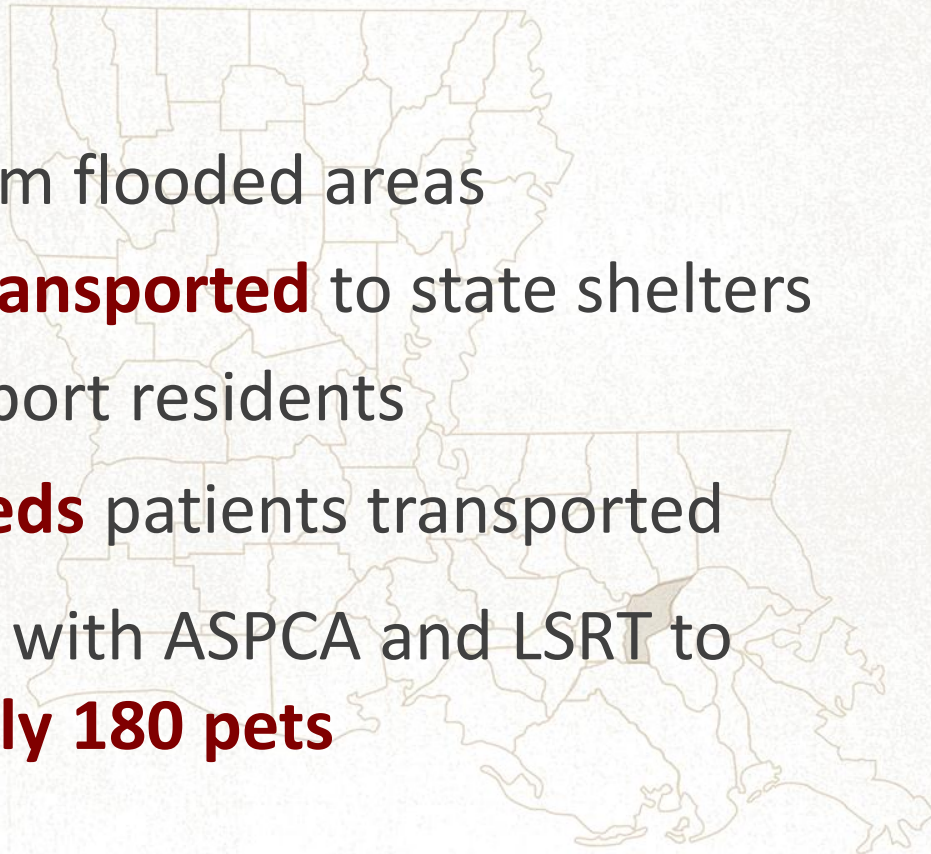


Indigo Lakes Boat Rescue



RESPONSE (Continued . . .)

- EVACUATIONS:
 - **Over 6,000** rescued from flooded areas
 - Approximately **3,900 transported** to state shelters
 - **79 buses** used to transport residents
 - **93 Medical Special Needs** patients transported
 - Animal Control worked with ASPCA and LSRT to transport **approximately 180 pets**





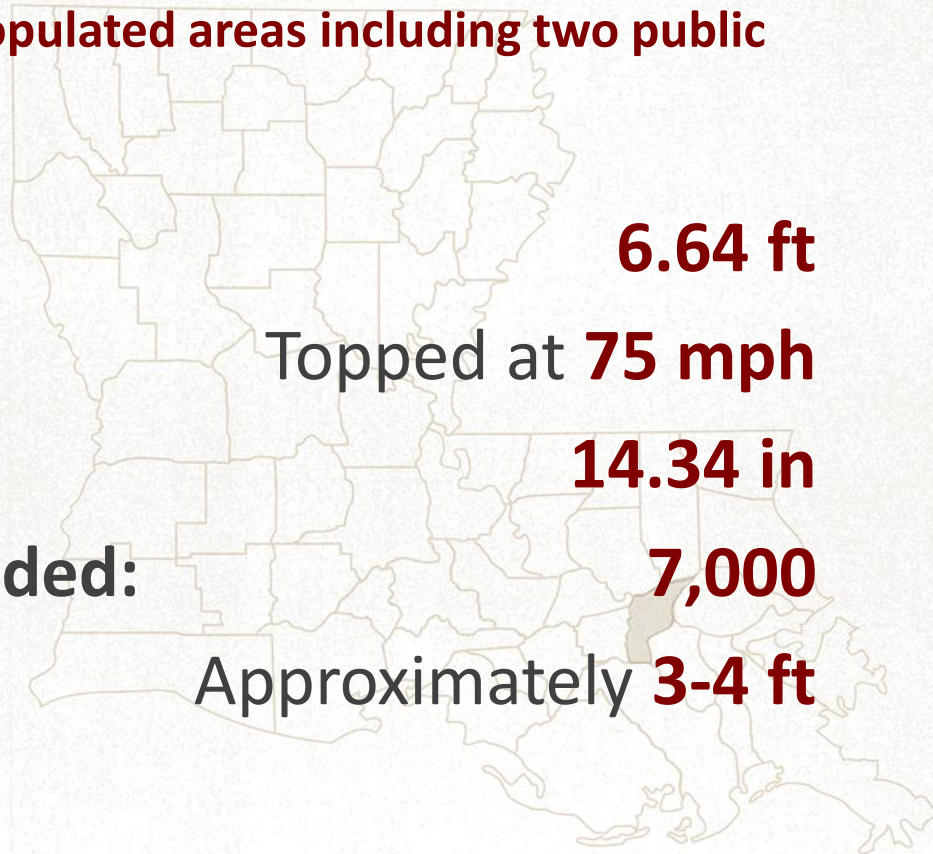
IMPACTS



IMPACTS ON THE PARISH

More than half of the Parish's most populated areas including two public schools flooded.

- Tide Gauge: **6.64 ft**
- Wind Gauge: Topped at **75 mph**
- Rainfall Gauge: **14.34 in**
- Estimated **structures** flooded: **7,000**
- **Water levels** in homes: Approximately **3-4 ft**





LAPLACE



I-10 Ramp



Hwy 51 and I-10

SPRING MEADOWS SUBDIVISION

Over 1800 homes and apartments



EAST ST. JOHN HIGH SCHOOL

1400 Students – 9 through 12

LAKE PONTCHARTRAIN ELEMENTARY

700 students





- No local hotels available due to flood & wind damage





RECOVERY

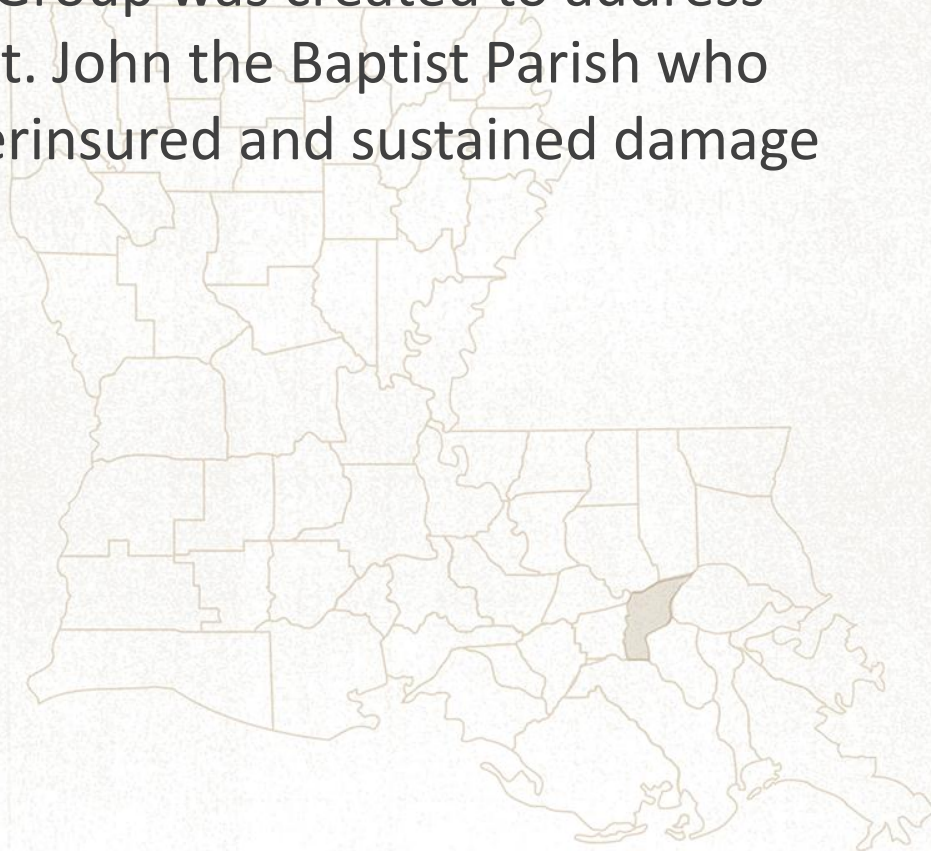
St. John the Baptist Parish provides **services** for Parish residents:

- FEMA Disaster Recovery Center (DRC)
- Parish Shelter (St. John Civic Center)
- **Disaster Supplemental Nutrition Program (DSNAP)**
- Business Call/Resource Center
- Transitional housing provided for more than 10,000 residents
- **Red Cross** managed parish shelter
- **Donations and food distribution sites** opened with help from Faith-Based Organizations
- **Monetary Recovery Fund** established

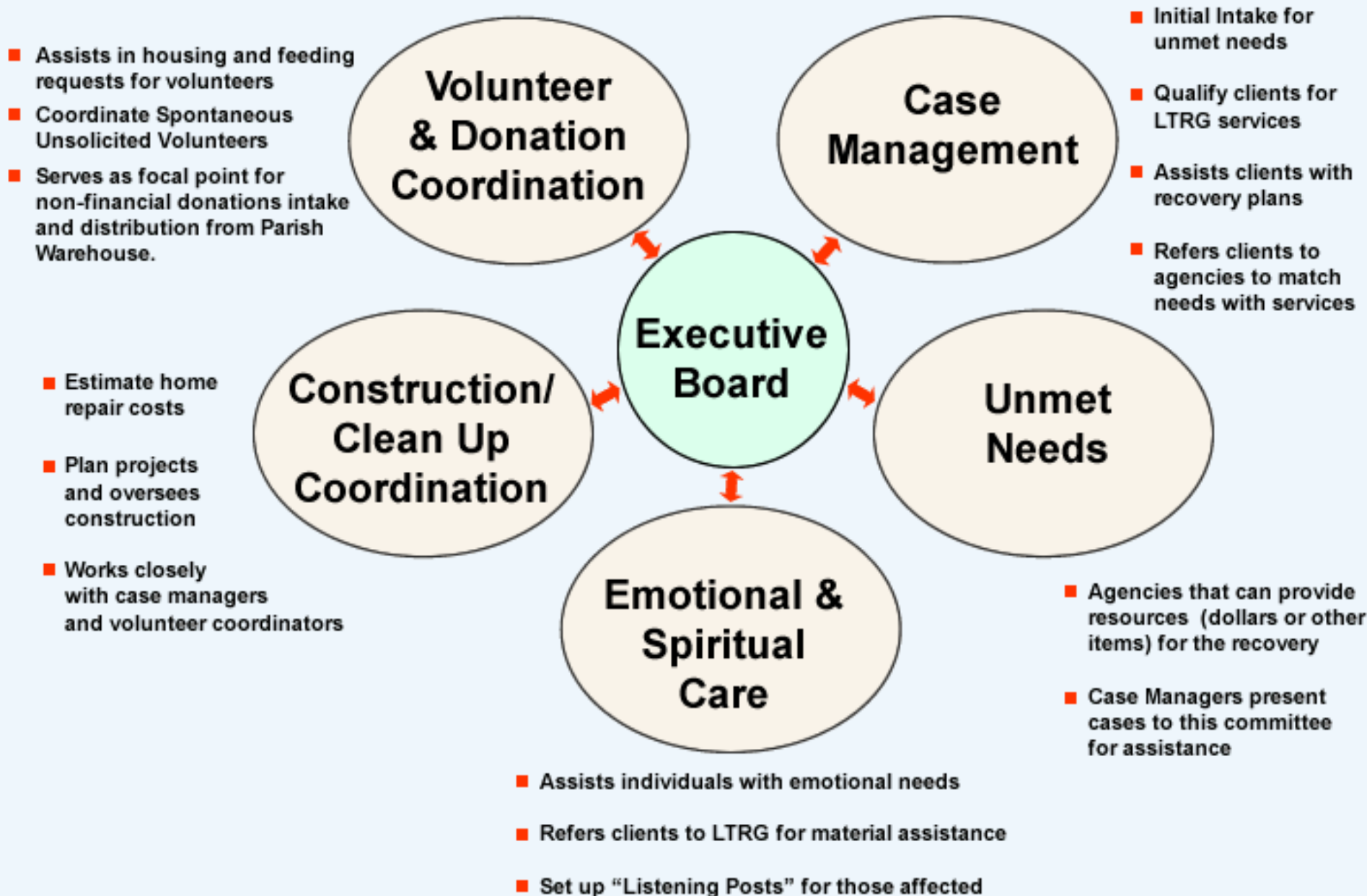


LONG TERM RECOVERY GROUP

- The SJBP Long Term Recovery Group was created to address the needs of homeowners in St. John the Baptist Parish who were either uninsured or underinsured and sustained damage from Hurricane Isaac.
- Committees
 - Case Management
 - Volunteer & Donation
 - Construction/Clean-up
 - Emotional & Spiritual Care
 - Unmet Needs



St. John the Baptist Long Term Recovery Group

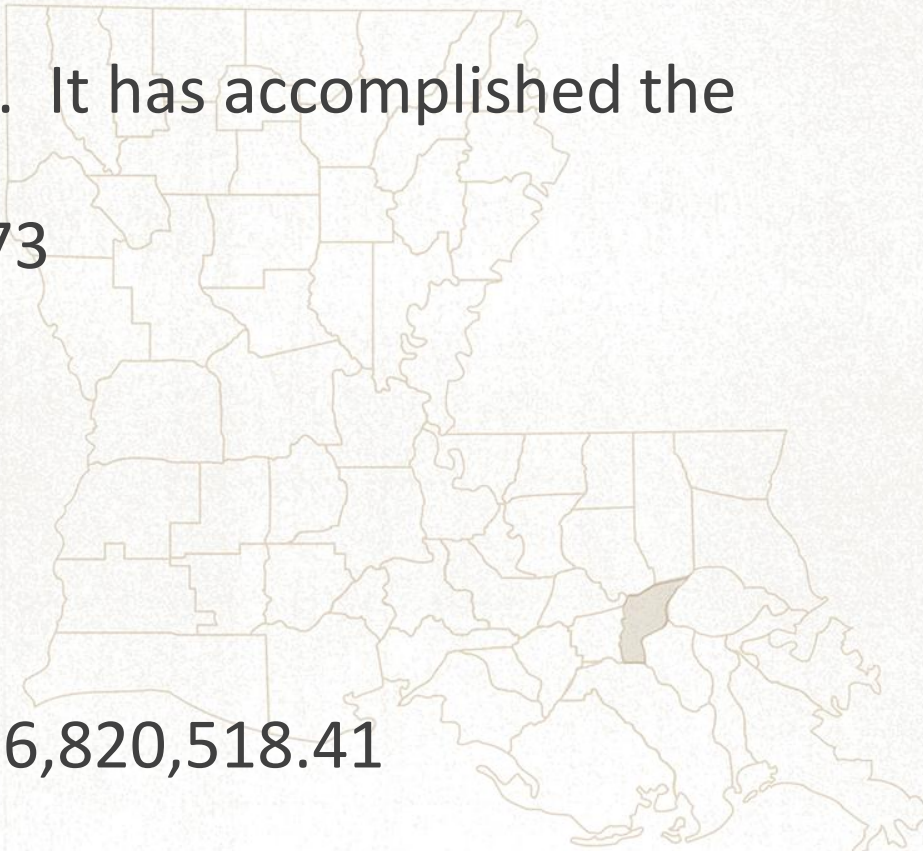




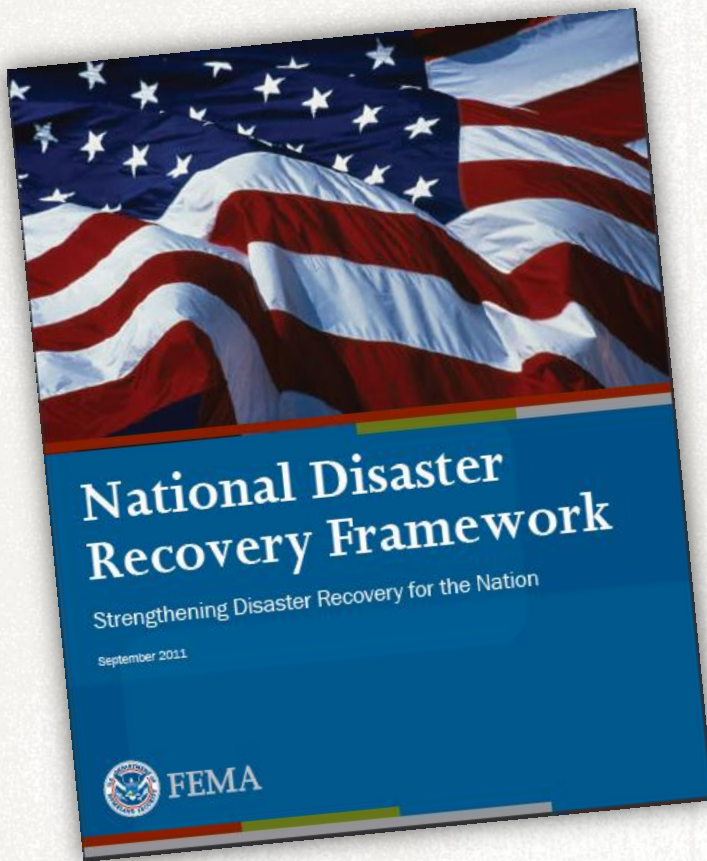
LONG TERM RECOVERY GROUP (continued...)

To date the LTRG is still **active**. It has accomplished the following:

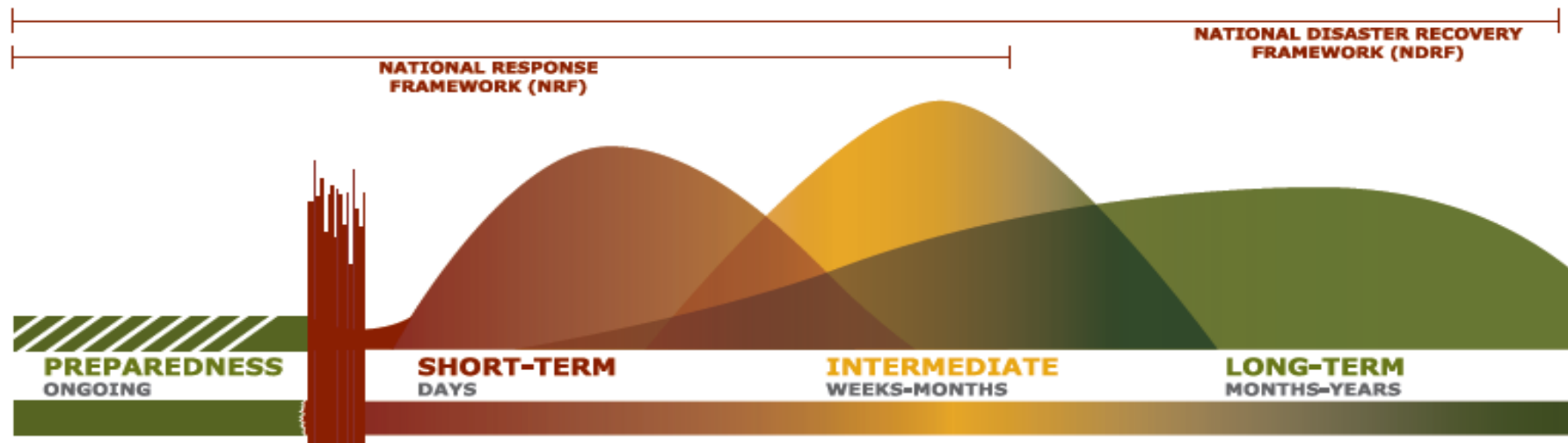
- **Homeowner Requests:** 1273
- **Projects Completed:** 1227
- **Volunteers:**
 - 4,125 Volunteers
 - 191,093 Hours
- **Donations:** \$259,488.54
- **Total Community Impact:** \$6,820,518.41



National Disaster Recovery Framework



- “a scalable, flexible, and adaptable framework coordinating structures to align key roles and responsibilities, linking local, state, tribal and federal governments, the private sector, and voluntary, faith-based and community organizations that play vital roles in recovery.”



**PRE-DISASTER
PREPAREDNESS**
Examples include:

- Pre-disaster recovery planning
- Mitigation planning and implementation
- Community capacity- and resilience-building
- Conducting disaster preparedness excercises
- Partnership building
- Articulating protocols in disaster plans for services to meet the emotional and health care needs of adults and children

SHORT-TERM RECOVERY
Examples include:

- Mass Care/Sheltering
 - Provide integrated mass care and emergency services
- Debris
 - Clear primary transportation routes
- Business
 - Establish temporary or interim infrastructure to support business reopenings
 - Reestablish cash flow
- Emotional/Psychological
 - Identify adults and children who benefit from counseling or behavioral health services and begin treatment
- Public Health and Health Care
 - Provide emergency and temporary medical care and establish appropriate surveillance protocols
- Mitigation Activities
 - Assess and understand risks and vulnerabilities

INTERMEDIATE RECOVERY
Examples include:

- Housing
 - Provide accessible interim housing solutions
- Debris/Infrastructure
 - Initiate debris removal
 - Plan immediate infrastructure repair and restoration
- Business
 - Support reestablishment of businesses where appropriate
 - Support the establishment of business recovery one-stop centers
- Emotional/Psychological
 - Engage support networks for ongoing care
- Public Health and Health Care
 - Ensure continuity of care through temporary facilities
- Mitigation Activities
 - Inform community members of opportunities to build back stronger

LONG-TERM RECOVERY
Examples include:

- Housing
 - Develop permanent housing solutions
- Infrastructure
 - Rebuild infrastructure to meet future community needs
- Business
 - Implement economic revitalization strategies
 - Facilitate funding to business rebuilding
- Emotional/Psychological
 - Follow-up for ongoing counseling, behavioral health, and case management services
- Public Health and Health Care
 - Reestablishment of disrupted health care facilities
- Mitigation Activities
 - Implement mitigation strategies

NDRF Core Principles

- Individual and Family Empowerment
- **Leadership and Local Primacy**
- Pre-Disaster Recovery Planning
- **Partnerships and Inclusiveness**
- Public Information
- **Unity of Effort**
- Timeliness and Flexibility
- **Resilience and Sustainability**
- Psychological and Emotional Recovery



Community Considerations



- Accessibility in recovery and rebuilding
- Inclusion of all community members
- Unmet needs
- Unique rural recovery needs
- Unique high density urban area needs

Local Disaster Recovery Manager

- Primary point of contact with the State Disaster Recovery Coordinator (SDRC)
- Role is to organize, coordinate and advance recovery.





State Disaster Recovery Coordinator

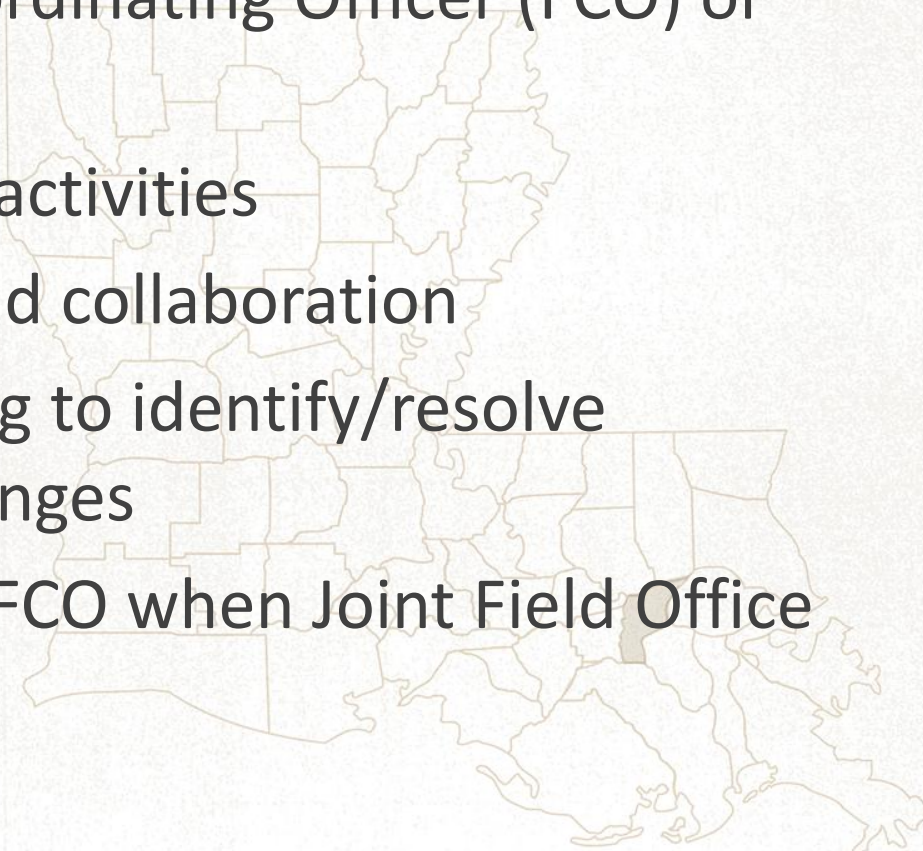
- Primary Interface with the Federal Disaster Recovery Coordinate (FDRC) to manage recovery activities
- In most cases the FDRC will coordinate with local communities through the SDRC.





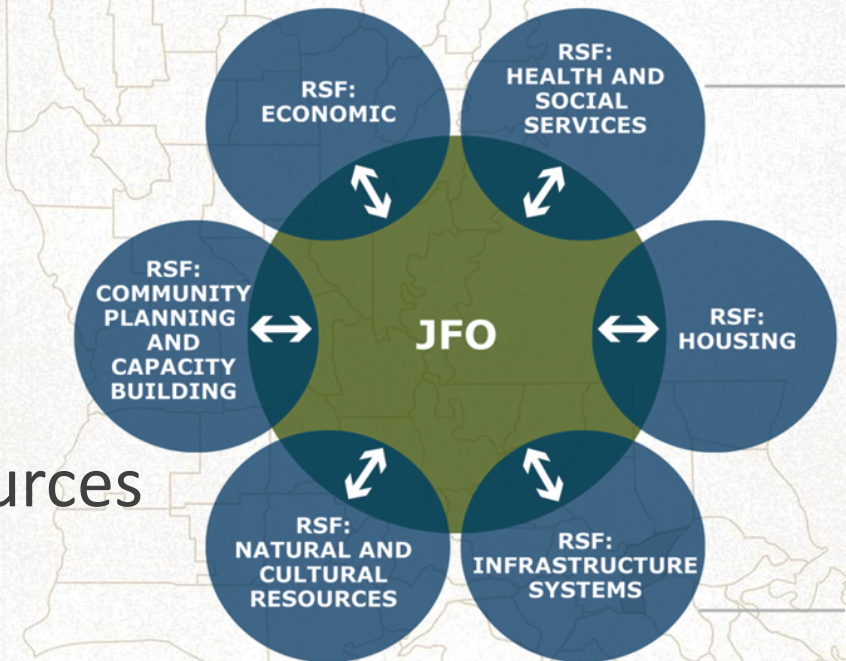
Federal Disaster Recovery Coordinator

- Deputy to the Federal Coordinating Officer (FCO) or Senior Federal Official
- Coordinating lead for RSF activities
- Facilitates coordination and collaboration
- Primary contact for helping to identify/resolve recovery issues and challenges
- Takes over lead role from FCO when Joint Field Office closes.



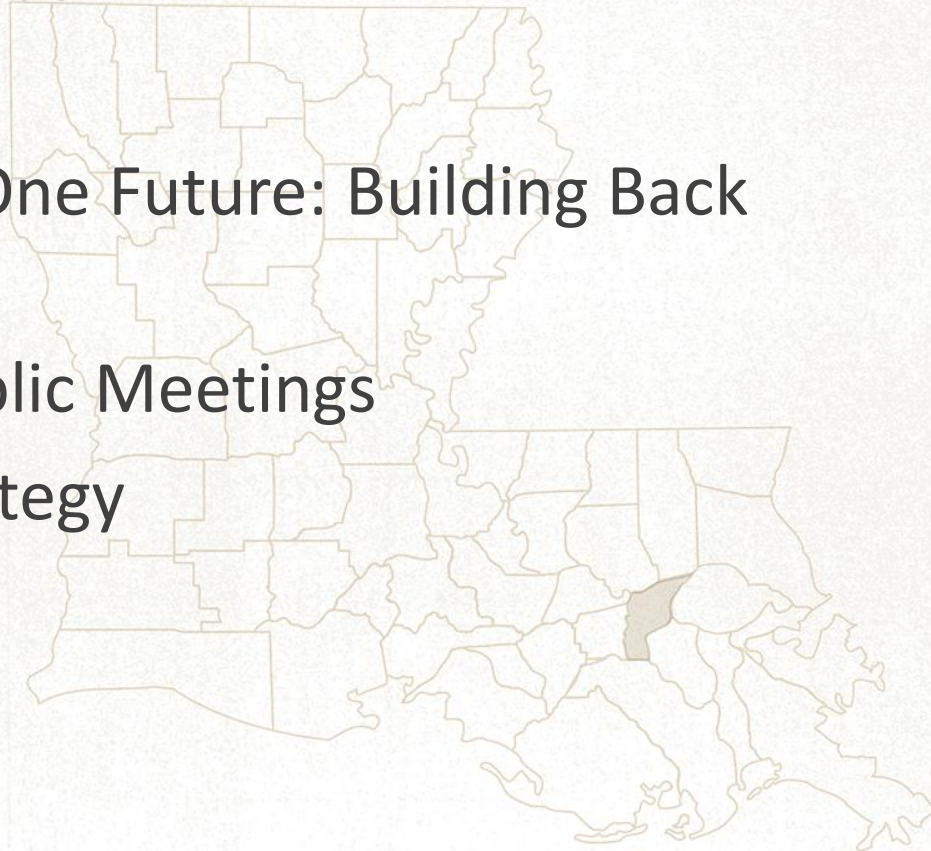
Recovery Support Functions

- Community Planning & Capacity Building
- Economic
- Health and Social Services
- Housing
- Infrastructure Systems
- Natural and Cultural Resources



Implementation in St. John

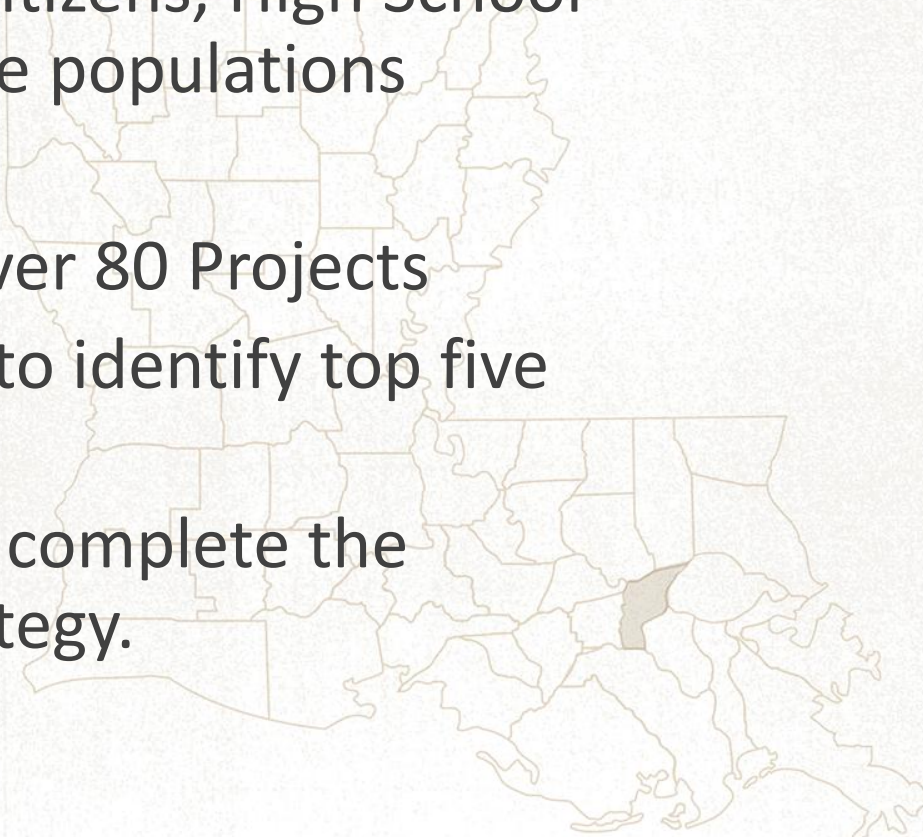
- Citizens Advisory Committee
- Sub-committee Chairs
- Branding – “One Parish, One Future: Building Back Better and Stronger”
- Community Outreach/Public Meetings
- Community Recovery Strategy





Community Outreach

- **12** meetings with Senior Citizens, High School students, & Less Accessible populations
- Online Survey
- **330** residents identified over 80 Projects
- **420** residents cast ballots to identify top five priority projects
- Top Projects were used to complete the Community Recovery Strategy.



Projects Identified

- Economic – 12 projects
- Health and Social Services – 5 projects
- Housing- 15 projects
- Infrastructure Systems – 6 projects
- Natural and Cultural Resources – 6 projects



Economic

12 Projects Identified:

- Support Youth Program Development
- Attract a Youth Entertainment Business
- Attract an Outlet Mall to the Parish
- Attract Upscale Restaurants
- Attract a Gas Station to the West Bank
- Build a Welcome Center
- Expand the Economic Development Department
- Convert Second Ward High School to Multi-Use Center
- Create Public Water Features
- Attract Fast Food Restaurants
- Beautify Entrance Signage
- Create West Bank Industrial Park



Health and Social Services



5 Projects Identified

- Improve Mental Health Access and Services
- Expand Public & Medical Transportation
- Increase Physical Health Awareness
- Expand Vocational Education
- Create & Develop Farmers Market

15 Projects Identified

- Safe Neighborhoods Initiative
- Establish Permanent Disaster Recovery Office
- Identify/Remediate Blighted Properties
- Grant and/or Forgivable Loan Homeowner Rehabilitation Program
- Senior Rental Housing Initiative
- First-Time Home Buyers Program
- Special Needs Public Facilities & Shelters
- Voluntary and/or Targeted Buyouts
- Rental Assistance to Homeless/At-Risk People
- Multi-Family Zoning Issues
- Provide Financial Incentives for Small Rental Properties
- Increase Permanent Supportive Housing
- Rebuild Public Housing to include Mixed-Income
- Develop Incentives to Promote Multi-Family Rental Housing
- Establish a Community Land Trust



Infrastructure



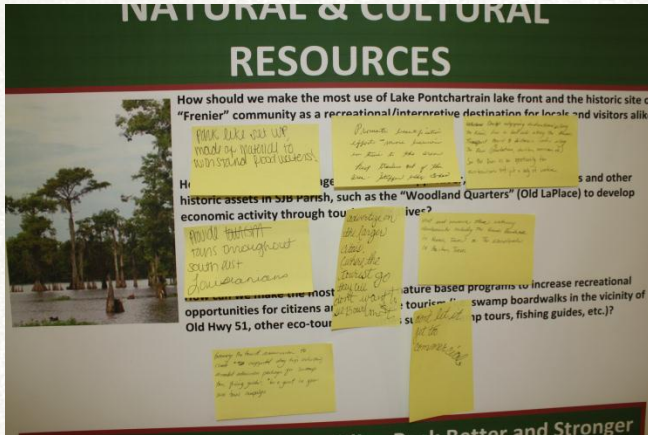
6 Projects Identified:

- Reduce Risk of Flooding
- Improve Drainage
- Improve/Increase Water Supply
- Improve Emergency Operations Center
- Connect I-10 to Reserve
- Improve Roadways & Road Maintenance

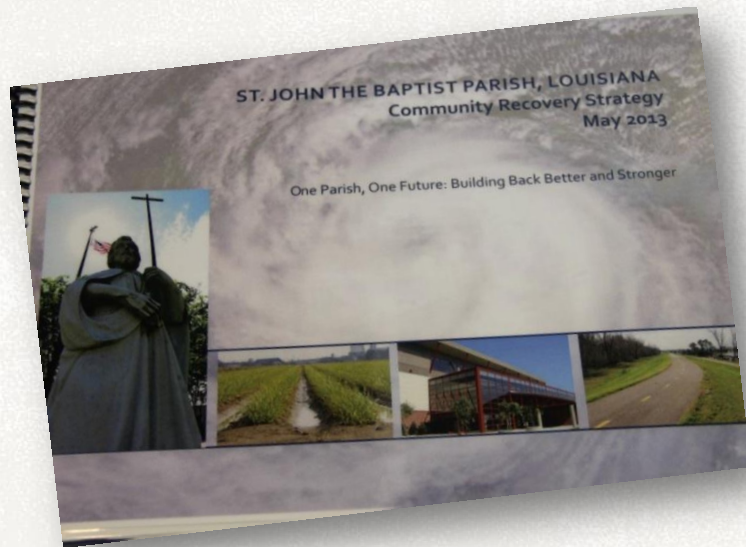
Natural and Cultural Resources

6 Projects Identified:

- Lake Pontchartrain Park
- Litter & Environmental Project
- Mississippi River Levee Bike Path
- St. John Cultural History Project
- Airline Hwy Scenic Byway
- West Bank Natural Resources Assess



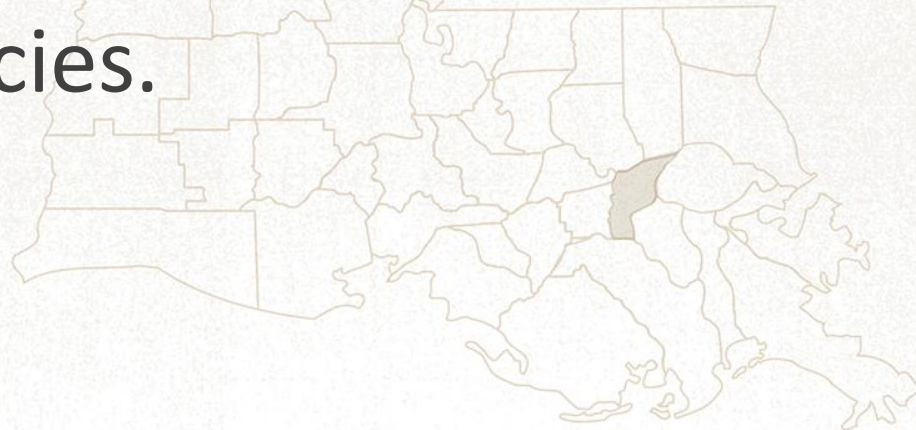
Community Recovery Strategy



- Blueprint for future of St. John
- Over 50 Projects Identified
- 21 projects in various phases of development
- Adopted by Council on May 15, 2013
- First Community to Complete Plan in Nation



Out of a disaster comes **opportunities** and St. John the Baptist Parish has taken advantage of those opportunities as we continue to receive **funding** from various agencies.



Contact Us

Natalie Robottom

parishpres@sjbparish.com

985-652-9569

Raymond Goodman

r.goodman@sjbparish.com

985-652-9569